

SIFT Series Fixed Industrial Thermal Imaging Camera



Fixed Focus. 24x7 Temperature Monitoring Camera



The **SIFT** Series is a High-Performance Fixed focus Industrial Cameras which is ideal for the following applications :

- **Process Control, Quality Control, R&D**
- **Laser Processing Monitoring**
- **Warehousing Safety**
- **Monitoring Of Factory Assembly Lines**

The **SIFT** Thermal Camera is available in **two variants** :

SIFT30 : Fixed-focus @ 384 x 288 **thermal resolution** (50Hz)

SIFT60 : Fixed-focus @ 640 x 512 **thermal resolution** (25Hz)

Both models offer measuring temperature from **-20°C~+550°C (-4°F to 1022°F)**, **Optional lenses of various focal lengths** for viewing thermal images of monitoring of objects at different depths & distances depending on application are available for configuration at time of ordering.

The SIFT Series will monitor **highest, lowest & average temperature** of the entire frame/region monitored with separate alarm outputs for precautionary actions.

Remote access

Alarm/Warning mode

Resolution Options
384x288 & 640x512

Temp range
-20°C~+550°C

Interchangeable lens options

IP54 rating

Fixed Thermal Imaging Camera Why & Where :

COMPACT & EASY TO INSTALL

The **SIFT** measures only **46.5 x 48 x 83mm & 150g** weight makes it easy to install in space constrained areas for uninterrupted condition monitoring.

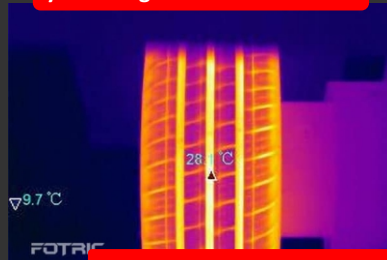


Optional lenses of various focal lengths.
for viewing thermal images of monitoring of objects at different depths & distances.

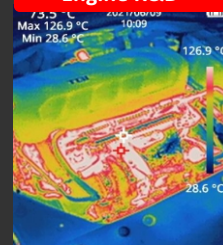
Process Control Monitoring, R&D, Quality Assurance, Manufacturing & Industrial Processes is all about measuring the temperature and or determining the shape of certain products on a production line.

The **SIFT Series Cameras** Offers temp range of **-20°C~550°C @ 384 x 288 & 640 x 512** resolution which makes it ideal for **detecting defects in minutest spots in both smoky or hard to see through environment**, during the manufacturing & industrial processes.

Tyre testing with thermal camera



Engine R&D



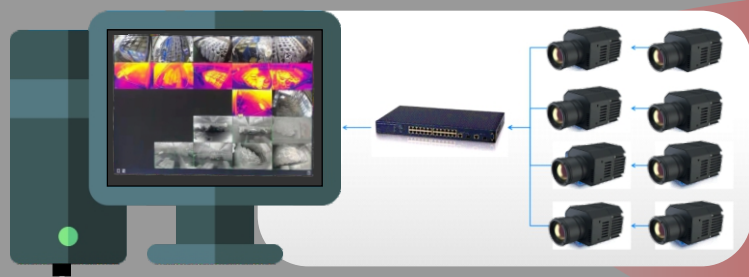
Automotive glass



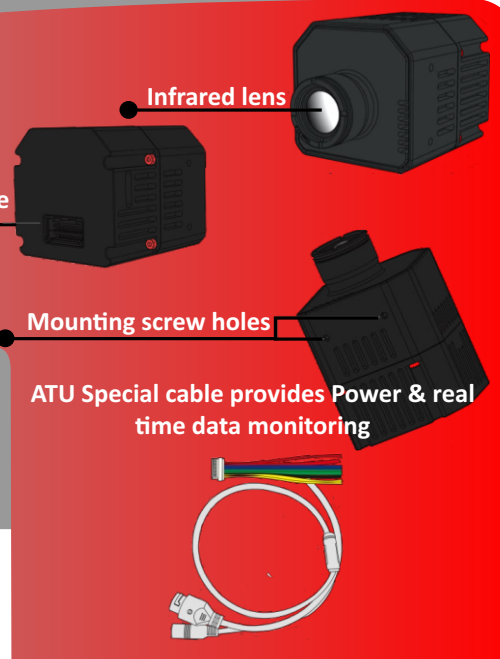
Monitoring processes for Process Control & Quality Assurance

The SIFT can display rich details at distances **0~20 meters**, will monitor **highest, lowest & average temperature** of the entire frame/region monitored with **separate alarm output actions**. Capable to **protect assets, improve safety, maximize uptime, and minimize maintenance costs**.

SIFT Series Fixed Industrial Thermal Imaging Camera



Power & Data interface



Advanced thermal analysis software offers a simplified workflow for displaying, recording & evaluating data from multiple IR cameras simultaneously—allowing you to quickly interpret and understand critical information.

Specifications :

Model	SIFT 30	SIFT 60
Detector type	VOx, Uncooled FPA detector	
Detector resolution	384 x 288	640 x 512
Spectral band	12μm	
Pixel size	17μm	12μm
Thermal sensitivity (NETD)	<50mK(40mK is optional)	
FOV	Depending on lens configured	
Frame rate	50Hz	25Hz
Focusing mode	Fixed focus lens	
Measurement range	-20°C~+550°C	
Measurement accuracy	±2°C or ±2%	
Measurement resolution	0.1°C	
Color palettes	18	
Temperature measurement tools	Fixed/centre, highest lowest temperatures, line & area monitoring	
Image viewing modes	Thermal imaging, DDE	
Video format	H264/265, Mp4 & Mov	
External connectivity	External (NVR*)	
Connectivity protocols	ONVIF, RTSP, MODBUS TCP	
LAN protocols	TCP, UDP, RTSP, HTTP, SMTP	
Network interface	RJ45	
Internal interface	1 x RJ45, 1 x DC, 1 x Alarm in, 1 x Alarm output, 1 x RS485, 1 x RS232	
Online viewing	Web management interface	
Alarm mode	I/O Alarms	
Alarm output	I/O output, log, save image, file sending (FTP), email (SMTP), notification	
Power supply	9-26VDC, ≤3 Watts	
Operating storage temperature	-20~+60°C/-40~70°C	
Ingress protection	IP54	
Dimension & weight	46.5mm×48mm×83mm, 150 grams	



Lens options for viewing thermal images of monitoring of objects at different depths & distances.

SIFT30 Len Options			
Focal length	FOV(HxV)	IFOV	Range
4mm	90.3°×68.7°	4.250mrad	0~10m
6.2mm	61.5°×45.7°	2.742mrad	0~10m
9.7mm	37.9°×28.7°	1.753mrad	0~10m
13mm	28.2°×21.3°	1.308mrad	0.15m
19mm	19.5°×14.7°	0.895mrad	0.15m
25mm	14.9°×11.2°	0.680mrad	0.20m
35mm	10.6°×8°	0.486mrad	0.20m
50mm	7.4°×5.6°	0.340mrad	0.20m
SIFT60 Lens options			
Focal length	FOV(HxV)	IFOV	Range
4.1mm	89.8°×75.7°	2.92mrad	0~10m
5.8mm	70°×57°	2.06mrad	0~10m
9.1mm	48°×38°	1.31mrad	0~10m
13mm	33.5°×26.9°	0.92mrad	0~15m
19mm	22.9°×18.4°	0.63mrad	0~15m
25mm	17.4°×14°	0.48mrad	0~20m
35mm	12.5°×10°	0.34mrad	0~20m
55mm	8°×6.4°	0.21mrad	0~20m

asian contec ltd,
asian center, b-28, okhla industrial area, phase-1, new delhi - 110020, india
contact nos. :+91-11-41860000 (100 lines), direct sales helpline :+91-11-41406926
web : www.stanlay.in, www.stanlay.com, email: sales@stanlay.com
regional office: faridabad, lucknow, mumbai, ahmedabad, bengaluru, hyderabad, bhubaneshwar

